



ULTRA



ULTRA NITRO 7 Q3



ULTRA NITRO 7 ECLIPSE



ULTRA NITRO 7 Q4



AH26 ULTRA NITRO 7



01 LIGHTWEIGHT



ULTRAWEAVE UPPER IS
ENGINEERED TO DELIVER
TARGETED SUPPORT & SHARP
BALL FEEL WITHOUT
COMPROMISING ON WEIGHT

02 LOCKDOWN



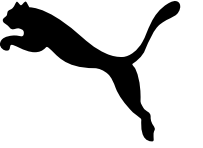
NEW LAST & SPEEDBELT
PROVIDE AN IMPROVED FIT
WITH LOCKED IN SUPPORT

03 ACCELERATION



NITRO FOAM
CREATES SUPERIOR ENERGY
RETURN & RESPONSIVE
TRACTION

NITRO STATISTICS



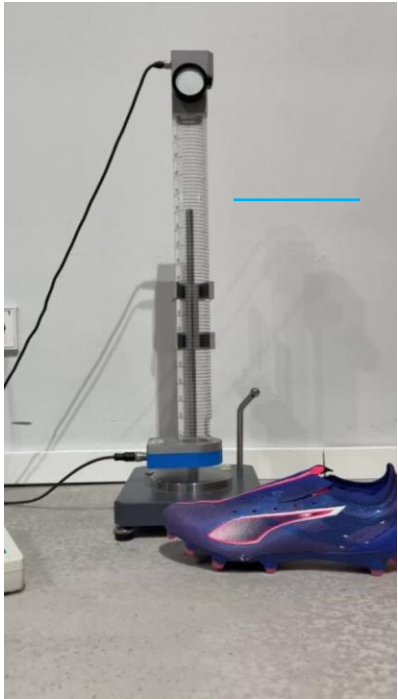
REBOUND

When looking at the amount of rebound from the insole...

Previous Ultra generation provides 38% rebound

Ultra **NITRO** provides **59% rebound** (+21%)

Ultra **NITRO Elite** provides **80% rebound** (+52%)



Ultra 5 Ultimate



Ultra 7 Pro
(Nitro)



Ultra 7 Ultimate
(NitroElite)

ENERGY RETURN

During a moment like sprinting (force placed on the insole in a very short moment of time)...

Previous Ultra generation provides 74% energy return

Ultra **NITRO** provides **85% energy return** (+11%)

Ultra **NITRO Elite** provides **93% energy return** (+19%)



ULTRA NITRO 7 ADULTS

TECH APPROACH

	O U T S O L E	N I T R O	U P P E R	C O N S T R U C T I O N
U L T I M A T E	PEBA FG SPEEDSYSTEM 2.0 with FASTTRAX 2.0	NITRO ELITE NITRO Elite strobels (full length) + NITRO Elite molded sockliner	ULTRAWEAVE: Engineered woven material including V-Shape 4 color print	Lace: Engineered slip-on construction (2 colors & 2 textures) LACELESS: Engineered SPEEDBELT (2 colors & 2 textures)
P R O	PEBA FG SPEEDSYSTEM 2.0 with FASTTRAX 2.0	NITRO NITRO strobels (full length) + NITRO molded sockliner	2 meshes, split for the V-Shape 3 color print	Lace: Engineered slip-on construction
M A T C H	TPU FG/AG SPEEDSYSTEM 2.0 with conical studs in the pivot area and in the heel	NITRO NITRO die cut sockliner	2 meshes, split for the V-Shape 3 color print	Lace: Engineered slip-on construction LACELESS: SPEEDBELT (2 colors, 2 textures)
P L A Y	TPU FG/AG SPEEEDSYSTEM 2.0 with more conical studs for versatile usage	EVA die cut sockliner	Lightweight mesh + skin upper 3 color print including V-shape	Lace: Regular tongue

ULTRA NITRO 7 JUNIORS

TECH APPROACH

	OUTSOLE	NITRO	UPPER	CONSTRUCTION
ULTIMATE	TPU FG/AG SPEEDSYSTEM with more conical studs for versatile usage	NITRO die cut sockliner	2 meshes, split for the V-Shape 3 color print	Lace: Engineered slip-on construction
				LACELESS: SPEEDBELT (2 colors, 2 textures)
MATCH	TPU FG/AG SPEEDSYSTEM with more conical studs for versatile usage	EVA die cut sockliner	Lightweight mesh + skin upper 3 color print including V-shape	Lace: Slip-on construction
				Engineered knit, seamless construction with stitch & turn
PLAY	TPU FG/AG SPEEDSYSTEM with more conical studs for versatile usage	EVA die cut sockliner	Lightweight synthetic upper 3 color print	Lace: Regular tongue
				LACELESS: roller knit with binding (FINESSE with stitch and turn)

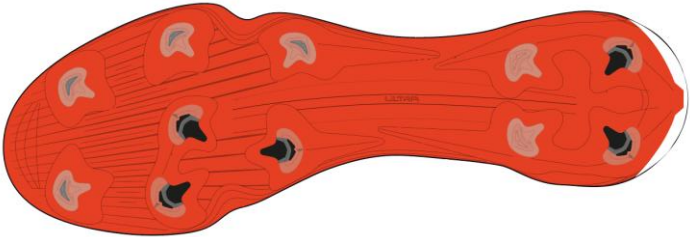
ULTRA NITRO 7 FG ADULTS - NEW LAST

OUTSOLE

PLATE & STUDS

NITRO

ULTIMATE



PEBA with external heel counter

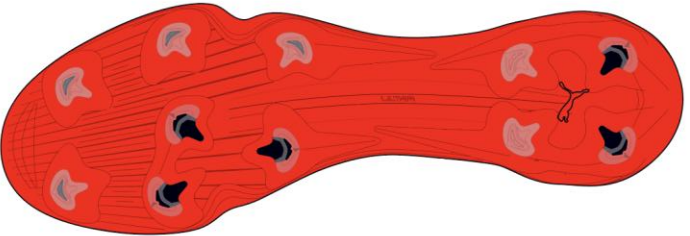
4 Fasttrax studs in the heel
+ 7 Fasttrax studs in the forefoot

Premium tooling treatment

NITRO ELITE

Full length NITRO Elite strobels
+
Full length molded NITRO Elite sockliner

PRO



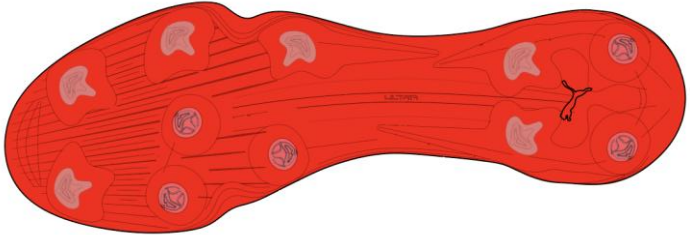
PEBA with external heel counter

4 Fasttrax studs in the heel
+ 7 Fasttrax studs in the forefoot

NITRO

Full length NITRO strobels
+
Full length molded NITRO sockliner

MATCH



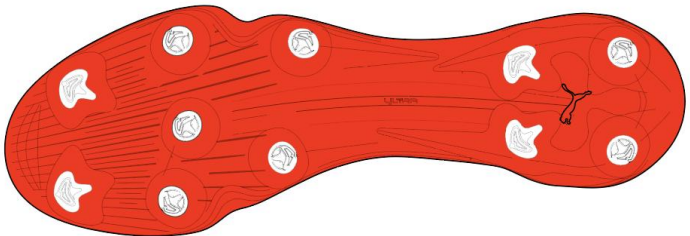
TPU outsole

With 2 conical studs in the heel
+ 3 conical studs in the pivot area

NITRO

Full length NITRO die cut sockliner

PLAY



TPU outsole

With 2 conical studs in the heel +
5 conical studs in the midfoot area

EVA die cut sockliner

ULTRA NITRO 7 FG/AG JUNIOR – FUTURE LAST

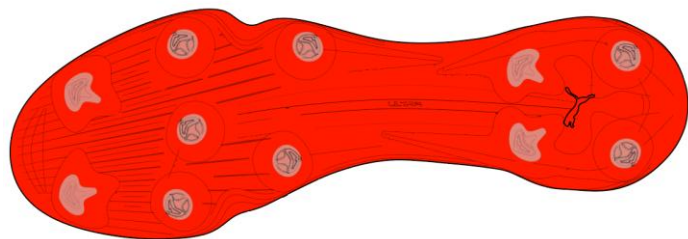
OUTSOLE

ULTRA speed inspired outsole for the next gen with versatile FG stud configuration that reduces rotational forces to reduce the risk of injuries while enabling fast & dynamic forward motion

PLATE & STUDS

NITRO

ULTIMATE



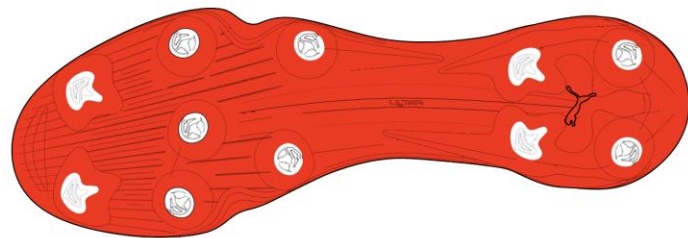
TPU outsole

With 2 conical studs in the heel + 5 conical studs in the midfoot area

NITRO

Full length NITRO die cut sockliner

MATCH

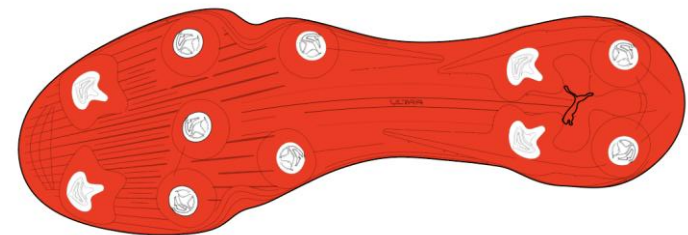


TPU outsole

With 2 conical studs in the heel + 5 conical studs in the midfoot area

EVA die cut sockliner

PLAY



TPU outsole

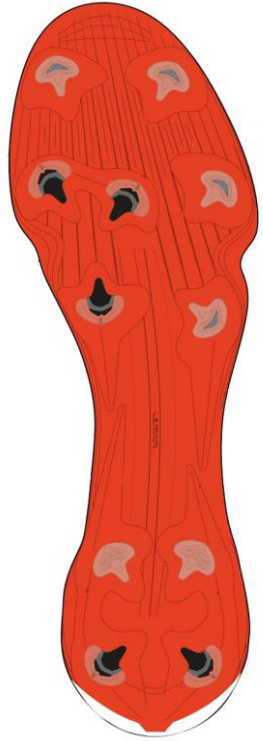
With 2 conical studs in the heel + 5 conical studs in the midfoot area

EVA die cut sockliner

ULTRA NITRO 7 CLEATED TOOLINGS

F G

For natural pitches,
also in slightly wet conditions

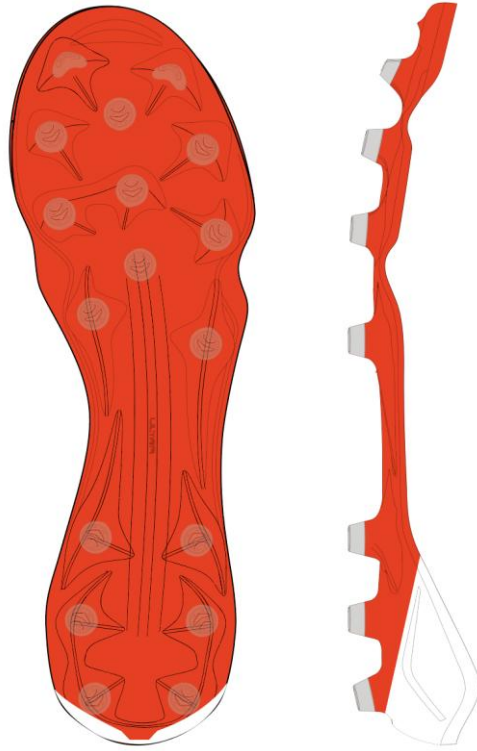


HEEL: 4 Fasttrax studs
FOREFOOT: 7 Fasttrax studs
TOTAL: 11 studs

ULTRA last
NITRO Elite strobel
NITRO Elite sockliner

A G

For 2G/3G artificial grass pitches
including a TPU toe reinforcement
for increased durability

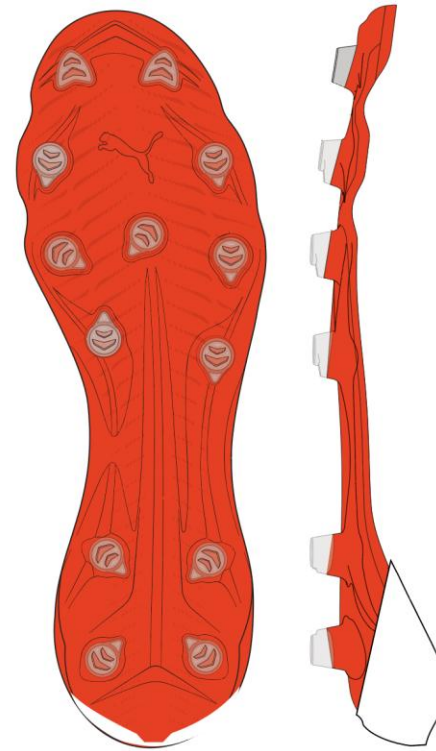


HEEL: 6 AG-specific conical studs in the heel
FOREFOOT: 9 AG-specific + 2 half-moon shaped
TOTAL: 17 studs

ULTRA last
NITRO Elite strobel
NITRO Elite sockliner
TPU toe reinforcement

H G

Engineered for Japanese hard ground pitches
including a TPU toe reinforcement
for increased durability

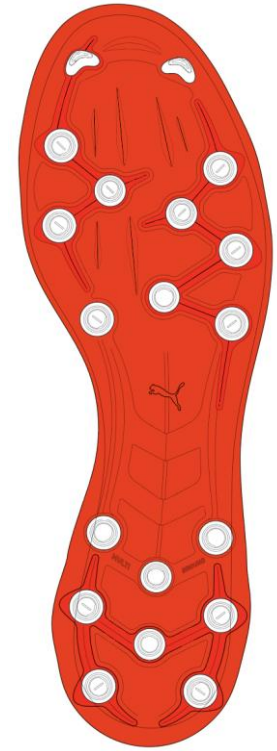


HEEL: 4 HG-specific studs
FOREFOOT: 9 HG-specific + 2 half-moon shaped
TOTAL: 15 studs

JAPAN last
NITRO Elite strobel
NITRO Elite sockliner
Rivets + TPU toe reinforcement

M G

Engineered for older generations
of artificial grass pitches



HEEL: 8 MG-specific studs in the heel
FOREFOOT: 10 MG-specific + 2 half-moon-shaped
TOTAL: 20 studs

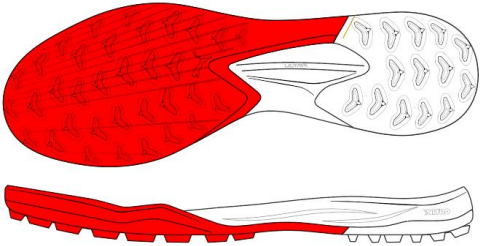
GENERIC OUTSOLE: KING last
O-therm sockliner

ULTRA NITRO 7 ADULTS TT & IT

TT

IT

PRO

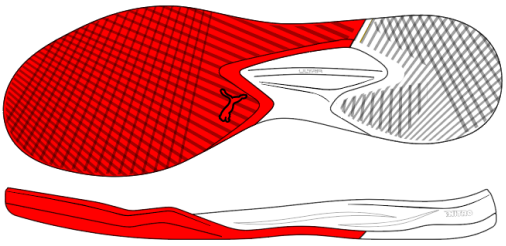


NITRO

NEW ULTRA last

Full length NITRO midsole

O-therm sockliner



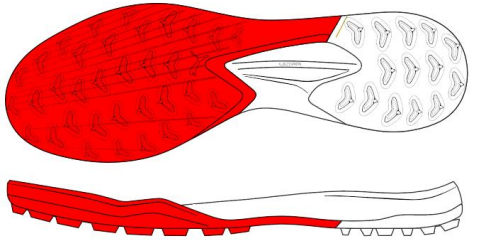
NITRO

NEW ULTRA last

Full length NITRO midsole

O-therm sockliner

MATCH

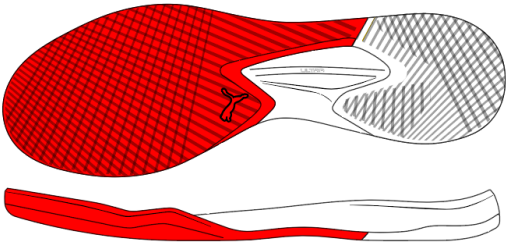


PROFOAM Lite

NEW ULTRA last

Full length PROFOAM Lite midsole

NITRO die cut sockliner



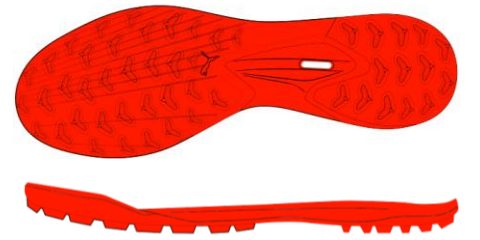
PROFOAM Lite

NEW ULTRA last

Full length PROFOAM Lite midsole

NITRO die cut sockliner

PLAY

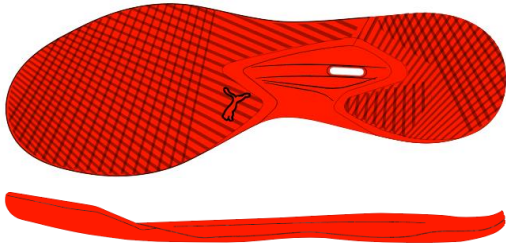


EVA

NEW ULTRA last

Full rubber cupsole with EVA heel drop in

EVA die cut sockliner



EVA

NEW ULTRA last

Full rubber cupsole with EVA heel drop in

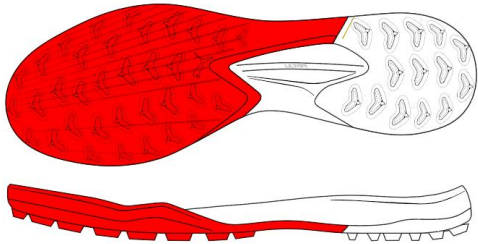
EVA die cut sockliner

ULTRA NITRO 7 JUNIOR TT & IT

TT

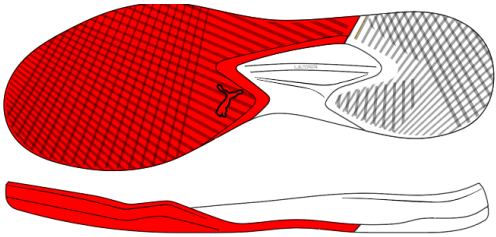
IT

MATCH



PROFOAM

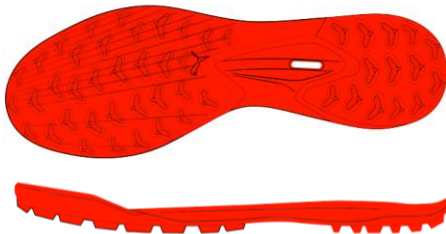
- NEW ULTRA last
- Full length PROFOAM midsole
- NITRO die cut sockliner



PROFOAM

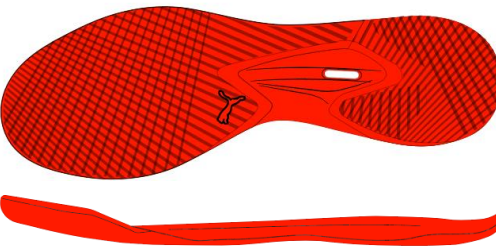
- NEW ULTRA last
- Full length PROFOAM midsole
- NITRO die cut sockliner

PLAY



EVA

- NEW ULTRA last
- Full rubber cupsole with EVA heel drop in
- EVA die cut sockliner

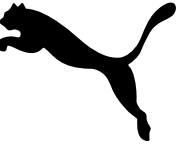


EVA

- NEW ULTRA last
- Full rubber cupsole with EVA heel drop in
- EVA die cut sockliner

ULTRA NITRO 7 ULTIMATE FG

109225



1. RESPONSIVE ACCELERATION

- **NITROFOAM™ ELITE**, PUMA's innovative nitrogen-infused foam for lightweight responsiveness, returns more energy every time you push off, helping you accelerate faster with every step.
- **SPEEDSYSTEM 2.0** outsole responds quicker to every push-off, packing more spring underfoot for explosive acceleration.
- **FastTrax 2.0 studs** – informed by dynamic pressure-mapping – grip hard on the plant and release clean on the push for traction that keeps up with every move you make.

2. LIGHTWEIGHT PRECISION

- **ULTRAWEAVE** upper is precision-engineered to cut the weight but keep the lockdown, giving you targeted support and a closer feel on the ball, even at top speed.
- Significant weight reduction

3. LOCKED-IN FIT

- A streamlined engineered slip-on construction hugs your foot tight and keeps you locked in
- A new speed last crafted to provide a snug fit and helps you have better touch of the ball



ULTRA NITRO 7 ULTIMATE LL FG

109301



1. RESPONSIVE ACCELERATION

- **NITROFOAM™ ELITE**, PUMA's innovative nitrogen-infused foam for lightweight responsiveness, returns more energy every time you push off, helping you accelerate faster with every step.
- **SPEEDSYSTEM 2.0** outsole responds quicker to every push-off, packing more spring underfoot for explosive acceleration.
- **FastTrax 2.0 studs** – informed by dynamic pressure-mapping – grip hard on the plant and release clean on the push for traction that keeps up with every move you make.

2. LIGHTWEIGHT PRECISION

- **ULTRAWEAVE** upper is precision-engineered to cut the weight but keep the lockdown, giving you targeted support and a closer feel on the ball, even at top speed.
- Significant weight reduction

3. LOCKED-IN FIT

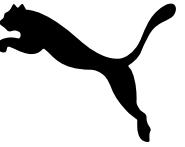
- A laceless, streamlined engineered slip-on construction hugs your foot tight and keeps you locked in
- A high-tension knitted strap around the ankle that is anchored at the heel and fused to the upper, keeps you fully locked
- A new speed last crafted to provide a snug fit and helps you have better touch of the ball



The upper of this shoe is made with at least 20% recycled materials as a step toward a better future.

ULTRA NITRO 7 PRO FG

| 109232



1. RESPONSIVE ACCELERATION

- **NITROFOAM™**, PUMA's innovative nitrogen-infused foam for lightweight responsiveness, returns more energy every time you push off, helping you accelerate faster with every step.
- **SPEEDSYSTEM 2.0** outsole responds quicker to every push-off, packing more spring underfoot for explosive acceleration.
- **FastTrax 2.0 studs** – informed by dynamic pressure-mapping – grip hard on the plant and release clean on the push for traction that keeps up with every move you make.

2. LIGHTWEIGHT PRECISION

- Two meshes used on the upper with a split construction to create the v-blocking design
- Significant weight reduction

3. LOCKED-IN FIT

- A streamlined engineered slip-on construction hugs your foot tight and keeps you locked in
- A new speed last crafted to provide a snug fit and helps you have better touch of the ball



ULTRA NITRO 7 MATCH FG/AG

| 109115



1. RESPONSIVE ACCELERATION

- **NITROFOAM™**, PUMA's innovative nitrogen-infused foam for lightweight responsiveness, returns more energy every time you push off, helping you accelerate faster with every step.
- **SPEEDSYSTEM 2.0** outsole responds quicker to every push-off, packing more spring underfoot for explosive acceleration.
- **FastTrax 2.0 studs** are complemented with more rounded studs for the most optimal traction on both firm ground and artificial grass.

2. LIGHTWEIGHT PRECISION

- Two meshes used on the upper with a split construction to create the v-blocking design
- Significant weight reduction

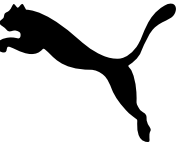
3. LOCKED-IN FIT

- A streamlined engineered slip-on construction hugs your foot tight and keeps you locked in
- A new speed last crafted to provide a snug fit and helps you have better touch of the ball



ULTRA NITRO 7 MATCH LL FG/AG

| 109141



1. RESPONSIVE ACCELERATION

- **NITROFOAM™**, PUMA's innovative nitrogen-infused foam for lightweight responsiveness, returns more energy every time you push off, helping you accelerate faster with every step.
- **SPEEDSYSTEM 2.0** outsole responds quicker to every push-off, packing more spring underfoot for explosive acceleration.
- **FastTrax 2.0 studs** are complemented with more rounded studs for the most optimal traction on both firm ground and artificial grass.

2. LIGHTWEIGHT PRECISION

- Two meshes used on the upper with a split construction to create the v-blocking design
- Significant weight reduction

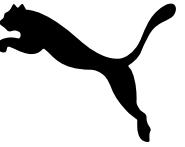
3. LOCKED-IN FIT

- A laceless, streamlined engineered slip-on construction hugs your foot tight and keeps you locked in
- A high-tension knitted strap around the ankle that is anchored at the heel and fused to the upper, keeps you fully locked
- A new speed last crafted to provide a snug fit and helps you have better touch of the ball



ULTRA 7 PLAY FG/AG

| 109146



1. RESPONSIVE ACCELERATION

- **SPEEDSYSTEM 2.0** outsole responds quicker to every push-off, packing more spring underfoot for explosive acceleration.
- **FastTrax 2.0 studs** are complemented with more rounded studs for the most optimal traction on both firm ground and artificial grass.

2. LIGHTWEIGHT PRECISION

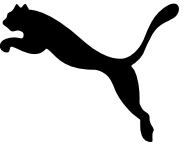
- Lightweight mesh with skin upper with v-blocking design coming from print
- Significant weight reduction

3. LOCKED-IN FIT

- A streamlined tongue construction hugs your foot tight and keeps you locked in
- A new speed last crafted to provide a snug fit and helps you have better touch of the ball



ULTRA NITRO 7 ULTIMATE FG/AG JR



1. RESPONSIVE ACCELERATION

- **NITROFOAM™**, PUMA's innovative nitrogen-infused foam for lightweight responsiveness, returns more energy every time you push off, helping you accelerate faster with every step.
- **SPEEDSYSTEM 2.0** outsole responds quicker to every push-off, packing more spring underfoot for explosive acceleration.
- **FastTrax 2.0 studs** – informed by dynamic pressure-mapping – grip hard on the plant and release clean on the push for traction that keeps up with every move you make.

2. LIGHTWEIGHT PRECISION

- Two meshes used on the upper with a split construction to create the v-blocking design
- Significant weight reduction

3. LOCKED-IN FIT

- A streamlined engineered slip-on construction hugs your foot tight and keeps you locked in
- A new speed last crafted to provide a snug fit and helps you have better touch of the ball



ULTRA NITRO 7 ULTIMATE LL FG/AG JR



1. RESPONSIVE ACCELERATION

- **NITROFOAM™**, PUMA's innovative nitrogen-infused foam for lightweight responsiveness, returns more energy every time you push off, helping you accelerate faster with every step.
- **SPEEDSYSTEM 2.0** outsole responds quicker to every push-off, packing more spring underfoot for explosive acceleration.
- **FastTrax 2.0 studs** – informed by dynamic pressure-mapping – grip hard on the plant and release clean on the push for traction that keeps up with every move you make.

2. LIGHTWEIGHT PRECISION

- Two meshes used on the upper with a split construction to create the v-blocking design
- Significant weight reduction

3. LOCKED-IN FIT

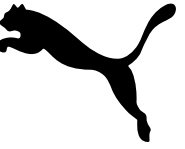
- A laceless, streamlined engineered slip-on construction hugs your foot tight and keeps you locked in
- A high-tension knitted strap around the ankle that is anchored at the heel and fused to the upper, keeps you fully locked
- A new speed last crafted to provide a snug fit and helps you have better touch of the ball



The upper of this shoe is made with at least 20% recycled materials as a step toward a better future.

ULTRA 7 MATCH FG/AG JR

| 109116



1. RESPONSIVE ACCELERATION

- **SPEEDSYSTEM 2.0** outsole responds quicker to every push-off, packing more spring underfoot for explosive acceleration.
- **FastTrax 2.0 studs** are complemented with more rounded studs for the most optimal traction on both firm ground and artificial grass.

2. LIGHTWEIGHT PRECISION

- Lightweight mesh with skin upper with v-blocking design coming from print
- Significant weight reduction

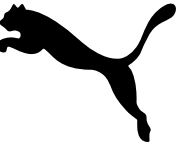
3. LOCKED-IN FIT

- A streamlined slip-on construction hugs your foot tight and keeps you locked in
- A new speed last crafted to provide a snug fit and helps you have better touch of the ball



ULTRA 7 MATCH LL FG/AG JR

| 109163



1. RESPONSIVE ACCELERATION

- **SPEEDSYSTEM 2.0** outsole responds quicker to every push-off, packing more spring underfoot for explosive acceleration.
- **FastTrax 2.0 studs** are complemented with more rounded studs for the most optimal traction on both firm ground and artificial grass.

2. LIGHTWEIGHT PRECISION

- Lightweight mesh with skin upper with v-blocking design coming from print
- Significant weight reduction

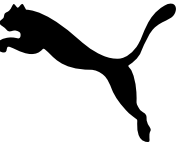
3. LOCKED-IN FIT

- A laceless engineered slip-on construction hugs your foot tight and keeps you locked in
- A new speed last crafted to provide a snug fit and helps you have better touch of the ball



ULTRA 7 PLAY FG/AG JR

| 109164



1. RESPONSIVE ACCELERATION

- **SPEEDSYSTEM 2.0** outsole responds quicker to every push-off, packing more spring underfoot for explosive acceleration.
- **FastTrax 2.0 studs** are complemented with more rounded studs for the most optimal traction on both firm ground and artificial grass.

2. LIGHTWEIGHT PRECISION

- Lightweight synthetic upper with v-blocking design coming from print
- Significant weight reduction

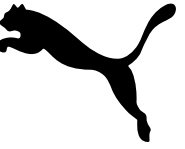
3. LOCKED-IN FIT

- A streamlined tongue construction hugs your foot tight and keeps you locked in
- A new speed last crafted to provide a snug fit and helps you have better touch of the ball



ULTRA 7 PLAY LL FG/AG JR

| 109303



1. RESPONSIVE ACCELERATION

- **SPEEDSYSTEM 2.0** outsole responds quicker to every push-off, packing more spring underfoot for explosive acceleration.
- **FastTrax 2.0 studs** are complemented with more rounded studs for the most optimal traction on both firm ground and artificial grass.

2. LIGHTWEIGHT PRECISION

- Lightweight synthetic upper with v-blocking design coming from print
- Significant weight reduction

3. LOCKED-IN FIT

- A laceless slip-on construction with roller knit binding hugs your foot tight and keeps you locked in
- A new speed last crafted to provide a snug fit and helps you have better touch of the ball



ULTRA 7 PLAY V FG/AG RB JR

| 109175



1. RESPONSIVE ACCELERATION

- Full rubber bottom for ultimate grip and versatility
- EVA die-cut sockliner provides added comfort

2. LIGHTWEIGHT PRECISION

- Lightweight synthetic upper with v-blocking design coming from print
- Significant weight reduction

3. LOCKED-IN FIT

- Velcro construction hugs your foot tight and keeps you locked in
- A new speed last crafted to provide a snug fit and helps you have better touch of the ball



ULTRA NITRO 7 SUMMARY

ULTRA NITRO 7 vs ULTRA 6

1. **NITRO** – added to the strobelt and sockliner to provide superior energy return
2. **NEW LAST** – improved on-foot feel and align to speed boot standards
3. **WEIGHT** – significant reduction in weight, approximately 15%
4. **ULTRAWEAVE** – engineered upper material that provides targeted support and sharp feel of the ball
5. **SPEEDBELT** – high-tension knit strap fused to the upper and ankle to provide full lockdown
6. **LACELESS** – new silhouette across genders and age groups, utilizing the Speedbelt for a locked-in fit

ULTRA NITRO 7 vs COMPETITION

1. **PRICE VALUE RATIO** – product offering at a better value for a more consumer friendly price
2. **LACELESS** – better lockdown provided through the innovative and purposeful tech of the Speedbelt
3. **WEIGHT** – outperforming competitor weights

SELL-IN ARGUMENTS

1. **NITRO** – we are utilizing PUMA's innovative nitrogen-infused foam, making our players as fast as possible
2. **PRICE VALUE RATIO** – product offering at a better value for a more consumer friendly price
3. **TAKEDOWNS** – cohesive visual identity and performance elements across all pricepoints and age groups (example: Nitro sockliner offered on our P3 Match pricepoint)
4. **LIGHTWEIGHT** – this new boot has been designed to be more lightweight than previous versions, resulting in approximately 15% reduction

The image features two sneakers against a dark, gradient background. On the left is a white sneaker with a red tiger logo on the side and red laces. On the right is a white sneaker with a red Jordan logo on the side and a red translucent sole. The word "FUTURE" is written in large, white, bold, sans-serif capital letters across the center, partially overlapping the sneakers.

FUTURE

FUTURE 9 Q3



FUTURE 9 ECL



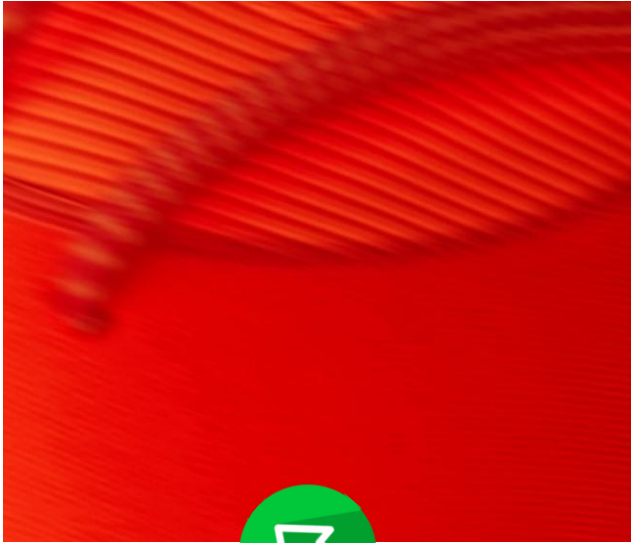
FUTURE 9 Q4



FUTURE 9

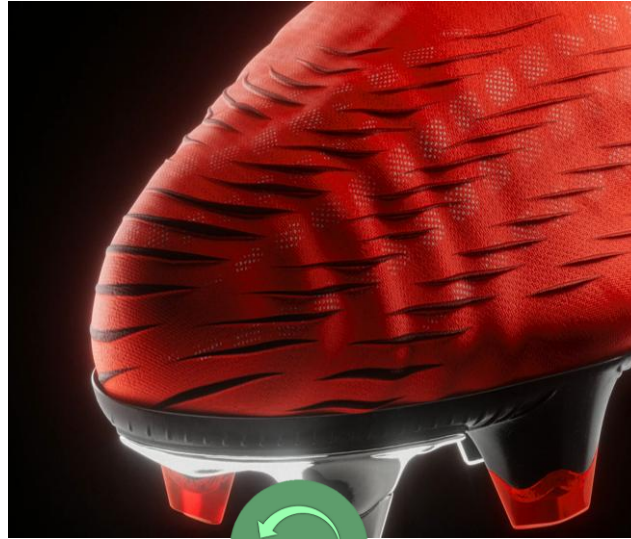


01



**EVOLUTION OF ADAPTIVE
FIT**

02



ENHANCED HAPTIC

03



**360-DEGREE FREEDOM
OF MOVEMENT**

FUTURE 9 ADULTS				
TECH APPROACH				
	OUTSOLE	UPPER CONSTRUCTION	ENHANCED SKILLS	ADAPTIVE FIT
ULTIMATE & LOW	PEBA FG + premium execution	MID-CUT + MULTI-TEXTURED ENGINEERED KNIT LOW-CUT + MULTI-TEXTURED ENGINEERED KNIT	GRIP ZONES: MULTI-LAYERED 5D PRINT	FUZIONPODS: PUFF PRINT ON SOFT LINING UPPER PWRTAPE: RE-ENGINEERED 2 PIECE
FUSION	TPU FG/AG + injected pigments	WRAPPED LOW-CUT + MULTI-TEXTURED ENGINEERED KNIT	GRIP ZONES: MULTI-LAYERED 5D PRINT	FUZIONPODS: PUFF PRINT ON SOFT LINING UPPER PWRTAPE: RE-ENGINEERED FUSION SPECIFIC
PRO	TPU FG/AG + injected pigments	MID-CUT + MULTI-TEXTURED ENGINEERED KNIT	GRIP ZONES: TOP LAYER 5D PRINT (LESS HEIGHT VS FUSION)	FUZIONPODS: 3D PRINT ON SOFT LINING UPPER PWRTAPE: ACROSS MIDFOOT (REF SS25)
MATCH & FUSION	TPU FG/AG	MID-CUT + ENGINEERED KNIT WRAPPED LOW-CUT + ENGINEERED KNIT	GRIP ZONES: DEBOSS + PRINT	FUZIONPODS: DEBOSS + PRINT TPU SKIN: ACROSS MIDFOOT (<i>MATCH MID CUT</i>)
PLAY	TPU FG/AG	LOW-CUT + FOUR-WAY STRETCH YARN & BINDING	GRIP ZONES: DEBOSS + PRINT	FUZIONPODS: DEBOSS + PRINT PRINT HINTING PWRTAPE

FUTURE 9 JUNIORS				
TECH APPROACH				
	OUTSOLE	UPPER CONSTRUCTION	ENHANCED SKILLS	ADAPTIVE FIT
PRO	TPU FG/AG	MID-CUT + ENGINEERED KNIT	GRIP ZONES: TOP LAYER 5D	FUZIONPODS: 3D PRINT ON SOFT LINING UPPER PWRTAPE: ACROSS MIDFOOT (REF SS25)
MATCH	TPU FG/AG	MID-CUT + KNIT	GRIP ZONES: DEBOSS + PRINT	FUZIONPODS: DEBOSS + PRINT TPU SKIN: ACROSS MIDFOOT
MATCH LL	TPU FG/AG	LOW-CUT W/SYNTHETIC HEEL	GRIP ZONES: DEBOSS + PRINT	FUZIONPODS: DEBOSS + PRINT TPU SKIN: ACROSS MIDFOOT
PLAY	TPU FG/AG	SYNTHETIC UPPER + REGULAR CONSTRUCTION	GRIP ZONES: DEBOSS + PRINT	FUZIONPODS: DEBOSS + PRINT PRINT HINTING PWRTAPE

FUTURE 9 ULTIMATE FG

// 109121

FUZIONFIT

SOFT LINING + FUZIONPODS
+ PWRTAPE



1. ADAPTIVE FIT

- **PWRTAPE** across knit for the ultimate lockdown and stability. Evolved design of PWRTAPE to allow for better in-step and fit.
- **FUZIONPODS** provide protection and freedom of movement by dynamically adapting to the foot's shape.
- **Multi-textured engineered knit**, together with a soft lining, provides an adaptive and supportive fit, acting as a second skin.

2. ENHANCED SKILLS

- **Reengineered mesh layer with 3D grip zones and GripControl Pro** finish, provides more control on the ball when passing, dribbling, and finishing.

3. AGILITY

- **FLEXGILITY** outsole built with two high-performance materials, combined with circular stud layout and dual-density composition, designed for agile 360-degree movement.
- Sockliner with **NanoGrip technology** ensures cushioning and anti-slip properties.



P1 Tooling insert: electroplated treatment to follow coloration on Ultra P1

The upper of this shoe is made with at least 20% recycled materials as a step toward a better future.

FUTURE 9 ULTIMATE LOW FG

/ 109276

FUZIONFIT

SOFT LINING + FUZIONPODS
+ PWRTAPE



1. ADAPTIVE FIT

- **PWRTAPE** across knit for the ultimate lockdown and stability. Evolved design of PWRTAPE to allow for better in-step and fit.
- **FUZIONPODS** provide protection and freedom of movement by dynamically adapting to the foot's shape.
- **Multi-textured engineered knit**, together with a soft lining, provides an adaptive and supportive fit, acting as a second skin.

2. ENHANCED SKILLS

- **Reengineered mesh layer with 3D grip zones and GripControl Pro** finish, provides more control on the ball when passing, dribbling, and finishing.

3. AGILITY

- **FLEXGILITY** outsole built with two high- performance materials, combined with circular stud layout and dual-density composition, designed for agile 360-degree movement.
- Sockliner with **NanoGrip technology** ensures cushioning and anti-slip properties.



P1 Tooling insert: electroplated treatment to follow coloration on Ultra P1

The upper of this shoe is made with at least 20% recycled materials as a step toward a better future.

FUTURE 9 FUSION FG/AG

/ 109127

LOW CUT, DIFFERENT CONSTRUCTION

KNITTED TONGUE CONSTRUCTION THAT WRAPS ACROSS THE FOOT FOR A LOW-CUT ADAPTED FIT.



1. ADAPTIVE FIT

- Re-engineered **PWRTAPE** across knit for the ultimate lockdown and stability.
- **Multi-textured engineered knit**, together with a soft lining, provides an adaptive and supportive fit, acting as a second skin.

2. ENHANCED SKILLS

- **Reengineered mesh layer with 3D grip zones and GripControl Pro finish**, provides more control on the ball when passing, dribbling, and finishing.

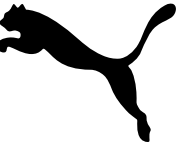
3. AGILITY

- Stud shape and placement around the pivot point that enables 360-degree freedom of movement needed for explosive direction changes.
- Sockliner with **NanoGrip technology** ensures cushioning and anti-slip properties.



FUTURE 9 PRO FG/AG

/ 109129



1. ADAPTIVE FIT

- **PWRTAPE** across the midfoot for lockdown and stability.
- **Engineered knit**, together with a soft lining, provides an adaptive and supportive fit, acting as a second skin.

2. ENHANCED SKILLS

- **Engineered mesh layer with 3D grip zones** provides more control on the ball when passing, dribbling, and finishing.

3. AGILITY

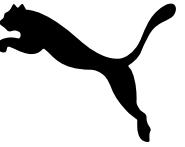
- Stud shape and placement around the pivot point that enables 360-degree freedom of movement needed for explosive direction changes.
- Sockliner with **NanoGrip technology** ensures cushioning and anti-slip properties.



The upper of this shoe is made with at least 20% recycled materials as a step toward a better future.

FUTURE 9 MATCH FG/AG

/ 109135



1. ADAPTIVE FIT

- **Support tape** across the midfoot for lockdown and stability
- **Soft, lightweight mesh upper** combined with a **stretchy knitted collar** and a mid-cut construction for a flexible, secure, and supportive fit

2. ENHANCED SKILLS

- **Embossed zones** across the upper to enhance grip and control of the ball

3. AGILITY

- Stud shape and placement around the pivot point enable **unrestricted 360-degree movement** needed for explosive changes of direction



FUTURE 9 MATCH FUSION FG/AG

/ 109127

LOW CUT, DIFFERENT CONSTRUCTION

KNITTED TONGUE CONSTRUCTION THAT WRAPS ACROSS THE FOOT FOR A LOW-CUT ADAPTED FIT.



1. ADAPTIVE FIT

- Soft, lightweight mesh upper combined with a **knitted, wrapped construction** to improve fit, comfort, and support.

2. ENHANCED SKILLS

- **Embossed zones** across the upper to enhance grip and control of the ball

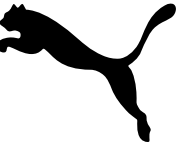
3. AGILITY

- Stud shape and placement around the pivot point enable **unrestricted 360-degree movement** needed for explosive changes of direction



FUTURE 9 PLAY FG/AG

/ 109170



1. ADAPTIVE FIT

- **Lightweight synthetic upper** and **elastic slip-on tongue** for comfort, support, and durability

2. ENHANCED SKILLS

- **Embossed zones** across the upper to enhance grip and control of the ball

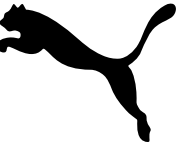
3. AGILITY

- Stud shape and placement around the pivot point enable **unrestricted 360-degree movement** needed for explosive changes of direction.



FUTURE 9 PRO FG/AG JR

/ 109186



1. ADAPTIVE FIT

- **PWRTAPE** across the midfoot for lockdown and stability.
- **Engineered knit**, together with a soft lining, provides an adaptive and supportive fit, acting as a second skin.

2. ENHANCED SKILLS

- **Engineered mesh layer with 3D grip zones** provides more control on the ball when passing, dribbling, and finishing.

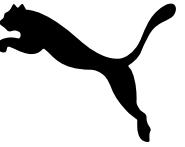
3. AGILITY

- Stud shape and placement around the pivot point that enables 360-degree freedom of movement needed for explosive direction changes.
- Sockliner with **NanoGrip technology** ensures cushioning and anti-slip properties.



FUTURE 9 MATCH FG/AG JR

/ 109187



1. ADAPTIVE FIT

- **Support tape** across the midfoot for lockdown and stability.
- **Soft, lightweight mesh upper** with a mid-cut construction for a flexible, secure, and supportive fit.



2. ENHANCED SKILLS

- **Embossed zones** across the upper to enhance grip and control of the ball.

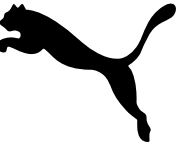
3. AGILITY

- Stud shape and placement around the pivot point enable **unrestricted 360-degree movement** needed for explosive changes of direction.



FUTURE 9 MATCH LL FG/AG JR

/ 109191



1. ADAPTIVE FIT

- **Support tape** across the midfoot for lockdown and stability.
- **Soft, lightweight mesh upper** combined with a **low-cut laceless slip-on** construction for a flexible, secure, and supportive fit.

2. ENHANCED SKILLS

- **Embossed zones** across the upper to enhance grip and control of the ball.

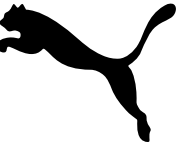
3. AGILITY

- Stud shape and placement around the pivot point enable **unrestricted 360-degree movement** needed for explosive changes of direction.



FUTURE 9 PLAY FG/AG JR

/ 109194



1. ADAPTIVE FIT

- **Lightweight synthetic upper** with a regular tongue construction providing support and durability.

2. ENHANCED SKILLS

- **Embossed zones** across the upper to enhance grip and control of the ball

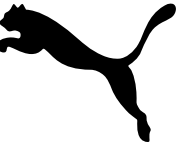
3. AGILITY

- Stud shape and placement around the pivot point enable **unrestricted 360-degree movement** needed for explosive changes of direction.



FUTURE 9 PLAY V FG/AG RB JR

/ 109202



1. ADAPTIVE FIT

- **Lightweight synthetic upper** with a velcro strap across the midfoot for easy slip-on and secure fit.

2. ENHANCED SKILLS

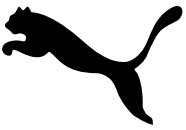
- **Embossed zones** across the upper to enhance grip and control of the ball

3. AGILITY

- **Rubber outsole** that features a versatile design that allows the young athlete to switch between playing surfaces without compromising traction.



FUTURE SUMMARY



FUTURE 9 vs FUTURE 8

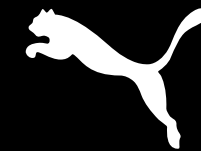
- ✓ Re-engineered knit with PWRTape (next gen design) to enhance adaptability and lockdown. Fuzion Pods deliver a new shape and positioning to enhance mobility and comfort.
- ✓ Re-engineered mesh with texturized zoned areas with 5D print on top and below layers to enhance haptic and touch with the ball.
- ✓ Tooling designed for freedom of movement and ease in traction, while elevating it through different tooling executions to up the game

FUTURE 9 vs COMPETITION

- ✓ Strong visual alignment across all price points.
- ✓ Same outsole design across all price points. Different execution of colors/materials to bring higher value to higher price points.
- ✓ Engineered knit from P1 to P3 (differentiation on number of colors on knit and textures); story of adaptable fit in P4 driven by a four-way stretch yarn tongue.
- ✓ Strong execution on entry price point with deboss and prints to achieve visual alignment to the P1 execution.

SELL-IN ARGUMENTS

- ✓ Future 9 designed driven by FIT and SKILLS. Upper technology delivers adaptability, lockdown and targeted grip zones, allowing athletes to move freely and perform without limits.
- ✓ Price competitive structure, while still bringing value and alignment all range.
- ✓ 1 to 1 visual approach on Adults + Juniors from upper to tooling.
- ✓ Higher value brought to price entry PPs as well (ex. P3 adults with Eng knit + P3 juniors with new execution of 1 to 1 alignment on Match Jr, and TPU support piece in Match J3 LL).
- ✓ Built considering feedback from previous generations, this evolution pushes boundaries while staying true to the Future DNA, designed for performance.



KING

KING 20 – Q3



KING 20 - BLACK PACK

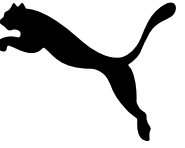
PRODUCT & GRAPHIC DETAILS



KING 20 – Q4



KING 20 ULTIMATE



1. TOTALTOUCH+

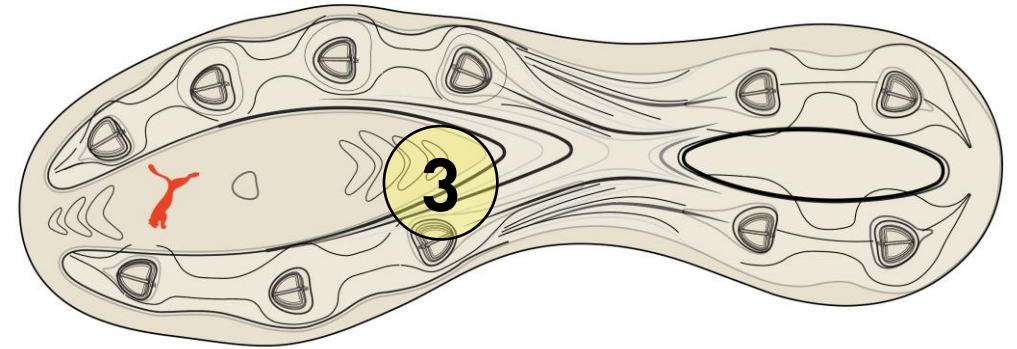
An innovative built-in non animal based material upper, TOTALTouch+ offers state of the art softness, lightweight and more durable than leather. It features 3D structures, precision laser perforations and grip finish to ensure unbeatable ball control.

2. 360° FIT

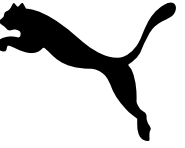
Engineered knit slip-on construction with cushioned tongue pods combined with a dynamic lacing system ensures comfort, stability, support and a secure fit.

3. FREEDOM OF MOVEMENT

New lightweight and responsive PEBA FG/AG tooling with modernized conical studs offers perfect balance between stability and manoeuvrability.



KING 20 PRO



1. TOTALTOUCH

An innovative built-in non animal based material upper: TOTALTouch offers world class softness and yet light and durable, It features precision laser perforations to ensure optimal ball control.

2. PERFECT LOCKDOWN

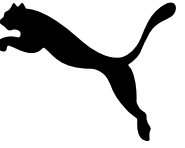
Ortholite CustomFit heel padding molds over time to provide a customized fit to elevate comfort and overall fit experience.

3. FREEDOM OF MOVEMENT

Responsive TPU tooling with modernized conical studs offers perfect balance between stability and manoeuvrability



KING 20 MATCH



1. **SOFTTOUCH+**

A Super-soft non-animal based upper material that has superb feel and touch and still light and durable.

2. **COMFORT FITTING**

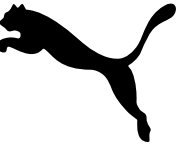
A wider last provides a more universal fit to accommodate players of all foot shapes. A knitted slip-on tongue naturally evolve the foot enhancing comfort and lockdown.

3. **FREEDOM OF MOVEMENT**

Responsive TPU tooling with modernized conical studs offers perfect balance between stability and manoeuvrability



KING 20 PLAY



1. SOFT ON THE TOUCH

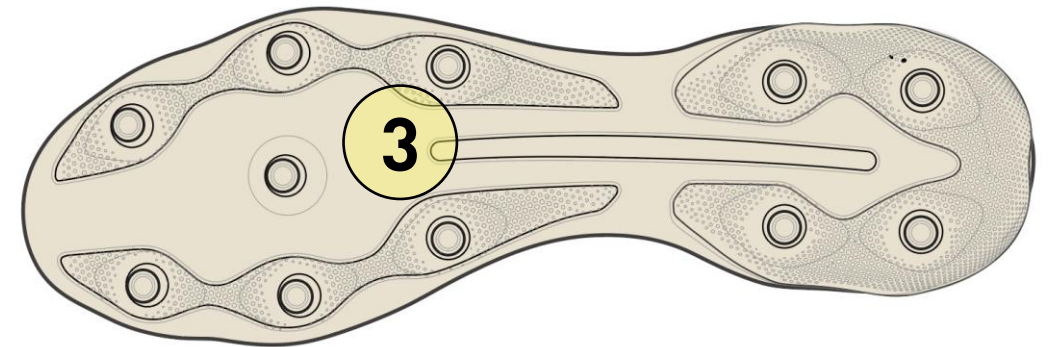
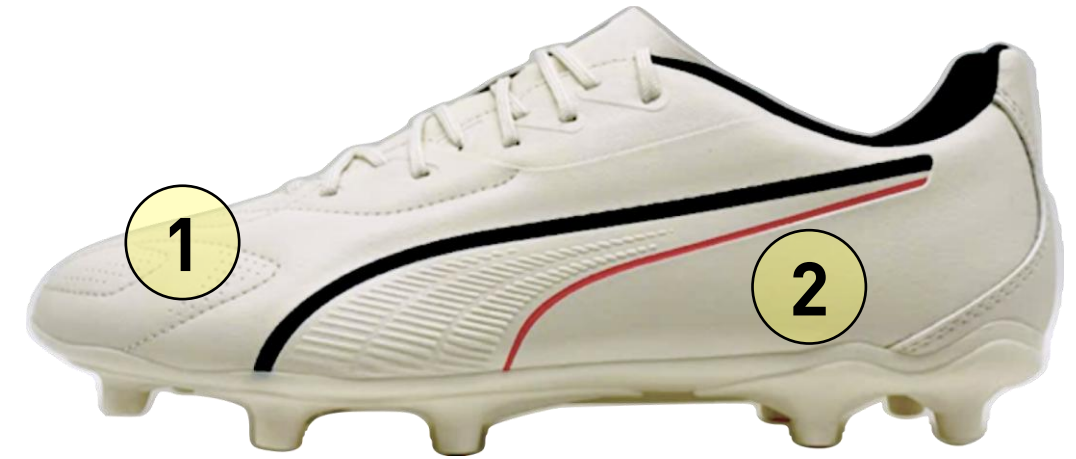
Soft yet durable synthetic leather with deco stitching

2. UNIVERSAL FIT

A wider last provides a more universal fit to accommodate players of all foot shapes.

3. FREEDOM OF MOVEMENT

Responsive TPU tooling with conical studs offers perfect balance between stability and manoeuvrability





AH26 Q3 PACK

ISD JUNE 1



UPDATE



UPDATE



UPDATE



ELIMINATE



ACCELERATE



VANTAGE

AH26 WHITE PACK

ISD JUNE 1



ELIMINATE



ACCELERATE



VANTAGE

AH26 WOMEN Q3 PACK

ISD JUNE 1



ACCELERATE



VANTAGE

ACCELERATE NITRO SQD 5



1. LIGHTWEIGHT SENSATION

Multi-layer upper construction with **PWRPRINT lightweight support** for multidirectional movement stability.

2. RESPONSIVE ACCELERATION

Innovative dual density **NITRO SQD midsole** combines best in-class cushioning and rebound with all around support – ideal for quick first step and explosive takeoff.

3. RELIABLE TRACTION

PUMA GRIP rubber maximizes traction for advanced agility and secure acceleration.



ACCELERATE NITRO SQD 5 vs ACCELERATE NITRO SQD 4

1. **PWRPRINT** lightweight support follows on PWRTAPE for multidirectional movement stability.
2. Additional **TPU midsole support** element for enhanced torsion control.
3. **Two different rubber patterns** for multidirectional movement stability.

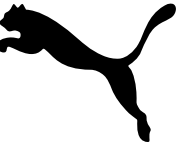
ACCELERATE NITRO SQD 5 vs COMPETITION

1. **NITRO SQD** midsole combines best in-class cushioning and rebound with all around support.
2. **330g (UK10)** while adi and asics are around 370g in their SPEED P1 models.
3. **OrthoLite X35 HYBRID sockliner** provides best rebound and cushioning.

SELL-IN ARGUMENTS ACCELERATE FRANCHISE

1. **Complete SPEED range** with 3 different pricepoints for unisex & women + Junior.
2. **Engineered women`s last** with lower instep, sculpted arch and reduced forefoot volume.
3. **Three different color options** (seasonal, white and black) for unisex and two for women (seasonal and white).

VANTAGE NITRO 2



1. PRECISION SUPPORT

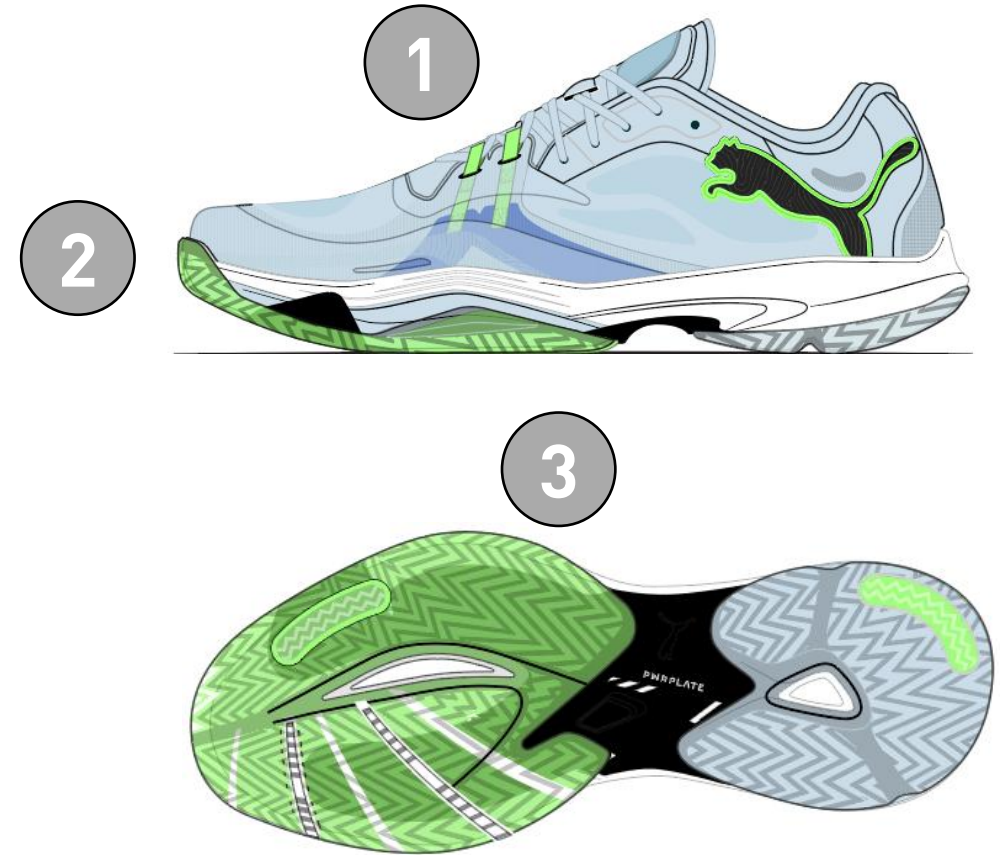
Built-in binding system that ensures adaptive lockdown and personalized fit when laced up.

2. LIGHTWEIGHT COMFORT

Engineered mesh zones for enhanced breathability and comfort.

3. FOREFOOT PROPULSION

- **NITRO™** foam providing superior responsiveness and comfort for explosive takeoff and landing.
- Snappy **PWRPLATE** acts as a lever for maximum energy transfer on every jump.



VANTAGE NITRO 2 vs VANTAGE NITRO

1. **New last** with reduced volume in forefoot.
2. **Engineered mesh zones** for enhanced breathability and comfort.
3. **Built-in binding system** for adaptive fit and maximum lockdown .

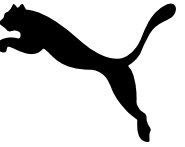
VANTAGE NITRO 2 vs COMPETITION

1. **NITRO foam** for superior responsiveness and comfort.
2. **Snappy PWRPLATE** acts as a lever for maximum energy transfer on every jump.
3. **OrthoLite X35 HYBRID sockliner** provides best rebound and cushioning.

SELL-IN ARGUMENTS VANTAGE FRANCHISE

1. **Complete JUMP range** with takedown, WMN fit + Junior.
2. **Engineered women`s last** with lower instep, sculpted arch and reduced forefoot volume.
3. **Two different color options** (seasonal and white) for unisex and women.

ELIMINATE NITRO SQD 5



1. DIMENSIONAL STABILITY

Engineered **PWRCAGE** technology to provide optimized lock-in and support for multidirectional movement stability.

2. RELIABLE COMFORT

Innovative dual density **NITRO SQD midsole** combines best in-class cushioning and rebound with all around support – ideal for quick first step and explosive takeoff.

3. SOLID TRACTION

PUMA GRIP rubber maximizes multidirectional traction for explosive movements.

